

Series 6, Frontloader Washing Machine, 10 kg, , WAL28PHVZA



- **ActiveOxygen™:** washes gently and effectively removes odours even at lower washing temperatures.
- Home Connect with Easy Start function recommends the right program to you - directly from your mobile device.
- Home Connect with push notifications that can be sent from your appliance directly to your mobile device
- With Home Connect you can now monitor and control your device remotely
- **Home Connect:** home appliances with smart connectivity for an easier everyday life.

Technical data

Built-in / Free-standing : Free-standing
 Door hinge : Left
 Color / Material body : Silver inox
 Height for building under : 848.00 mm
 Height of the product : 848 mm
 Dimensions of the product : 848 x 598 x 590 mm
 Wheels : No
 Net weight : 76.2 kg
 Drum volume : 68 l
 Door Frame : Silver-inox, black-grey
 Noise level washing : 46 dB(A) re 1 pW
 Connection Rating : 2300 W
 Fuse protection : 10 A
 Voltage : 220-240 V
 Frequency : 50 Hz
 Energy Star Qualified : No
 Cord Included : No
 Plug type : South Africa plug
 Length of drain hose (in) : 59.05
 Length of supply hose (in) : 59.05
 Dimensions of the packed product : 34.25 x 25.39 x 26.77
 Net weight : 168.000 lbs
 Gross weight : 170.000 lbs
 Length of drain hose : 150.00 cm
 Length of supply hose : 150.00 cm
 Dimensions of the packed product (HxWxD) : 870 x 680 x 645 mm
 Gross weight : 77.2 kg
 Connection Rating : 2300 W
 Fuse protection : 10 A
 Voltage : 220-240 V
 Frequency : 50 Hz
 Water protection system : Multiple water protection
 Number of Options : 14
 Spin speed options : Variable
 Digital countdown indicator : Yes

Series 6, Frontloader Washing Machine, 10 kg, , WAL28PHVZA

- WAL28PHVZA

Engine power/Consumption

- Capacity: 10 kg
- Energy consumption :190 kWh per year, based on 220 standard washing cycles
- Energy consumption:standard 60 °C cotton programme 1.2 kWh full load and 0.6 kWh partial load and 40 °C cotton programme 0.6 kWh partial load
- Weighted power consumption off-mode / left-on mode: 0.1 W / 0.1 W
- Water consumption 12100 litres per year, based on 220 standard washing cycles
- B spin class
- Maximum spin speed: 1400rpm
Remaining moisture:53 %
- Programme time:60 °C cotton programme 310 min at full load 290 min at partial load and 40 °C cotton programme 290 min partial load
- Duration of the left-on mode: 5 min
- Programme time:60 °C cotton programme 310 min at full load 290 min at partial load and 40 °C cotton programme 290 min partial load
- Noise level spinning:73dB (A) re 1 pW:

Programmes

Options

- VarioPerfect: time- or energy optimized programs with perfect wash performance
- Touch control buttons: Prewash, Reduced Ironing, Spin Speed Reduction, Start Delay, Temperature Selection, SpeedPerfect, Start / Reload / Pause, soaking, rinse hold, Memory und 24 h Start Delay

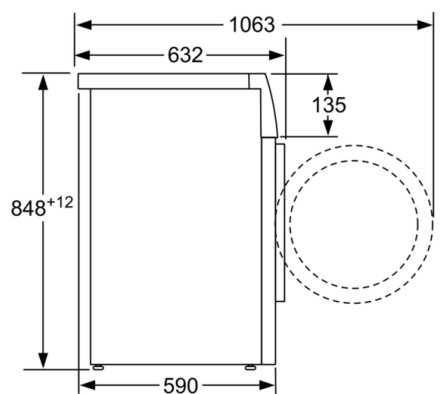
Comfort and Safety

- Safeguard monitoring system adjusts load distribution
- XXL Drum volume: 68 l
- VarioDrum: gentle and efficient washing
- DrumClean with reminder function
- 32 cm porthole, Silver-inox, black-grey with 171° opening door
- magnet with pull-open latch
- Reload function/ pause function
- Ferrite-BLDC
- BLDC with warranty
- AntiVibration
- Sound insulation by bottom cover
- Flow-through sensor
- ActiveWater: water management system
- Multiple water protection
- Recommended Load
- Consumption Indication: Information about energy and water consumption
- Jog dial w mech. button
- Large touch-LED-display for programme status indication, temperature selection, max. spin speed, remaining time and 24 h end time delay, load recommendation and consumption indication
- Foam detection system
- Child Lock
- easy clean
- Divider for Liquid Detergent

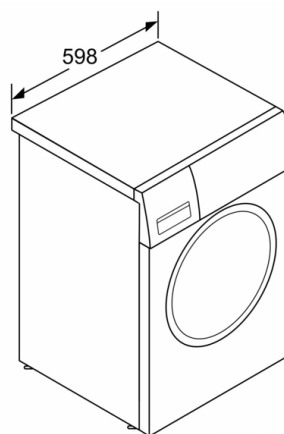
General Information

- Slide-Under
- Dimensions (H x W x D): 84.8 x 59.8 x 59 cm
- EcoSilence Drive

**Series 6, Frontloader Washing Machine, 10
kg, ,
WAL28PHVZA**



measurements in mm



measurements in mm